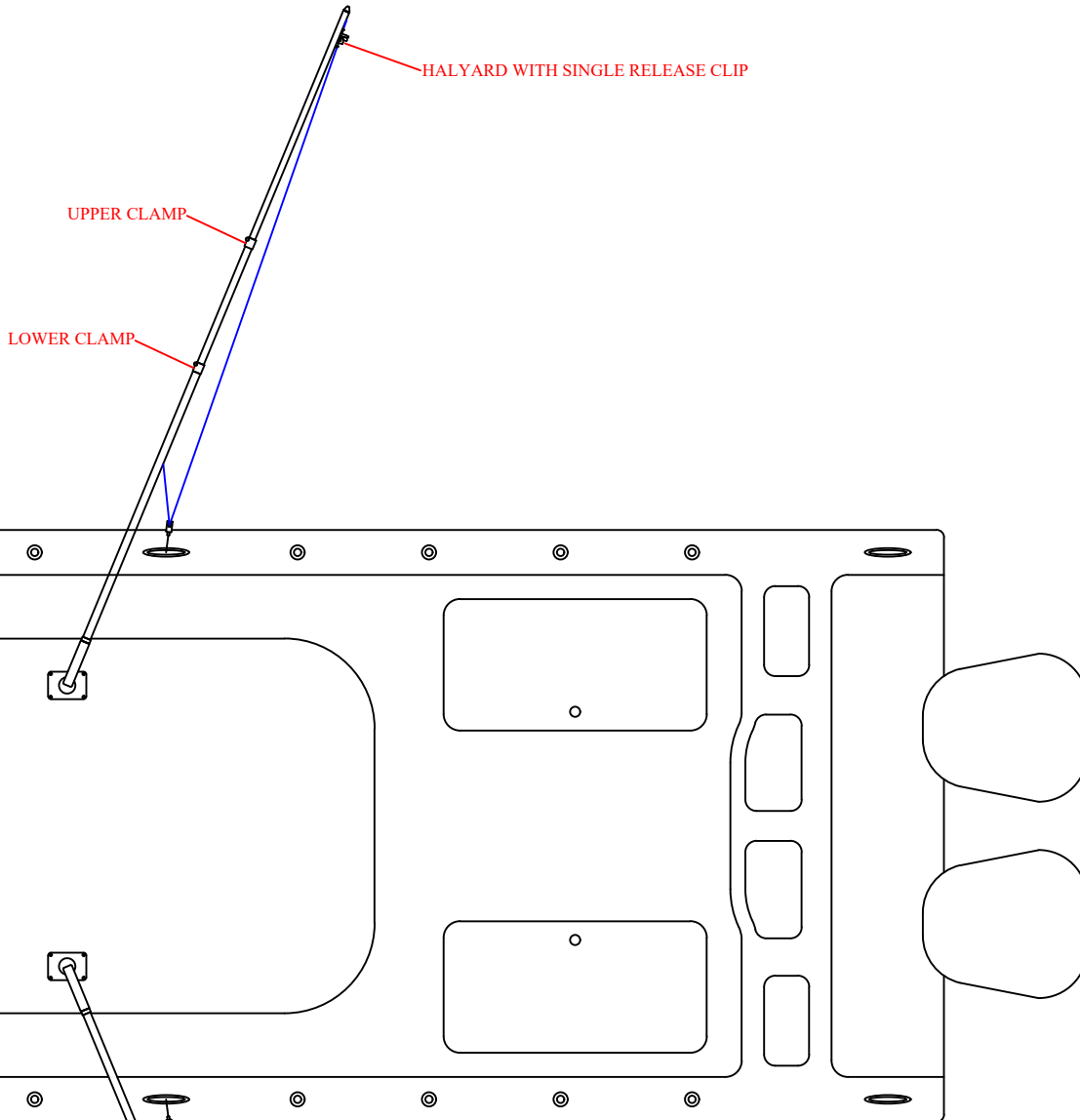


MARSH TACKY CARBON I.T. RETRACTABLE OUTRIGGER INSTRUCTIONS

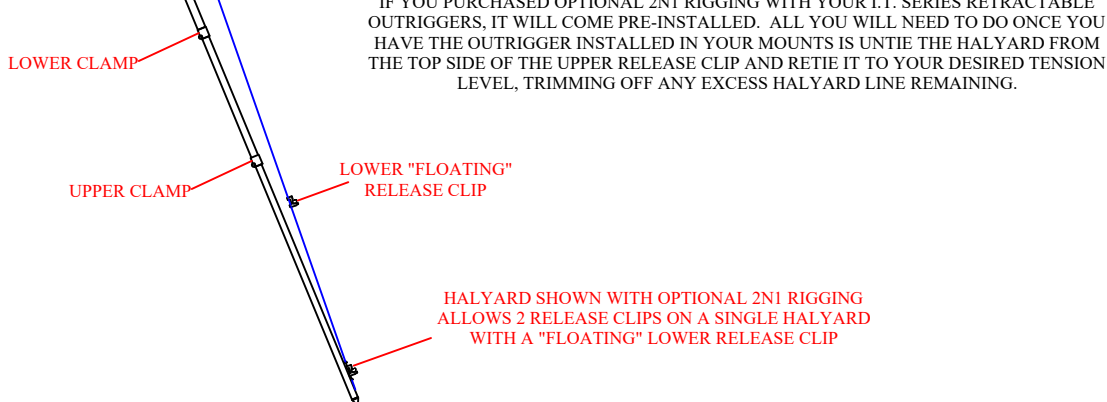
STEP 3: RIGGING

IN ORDER FOR YOUR OUTRIGGERS TO OPERATE SMOOTHLY AND EFFECTIVELY, THE HALYARD LINE MUST EXIT FROM THE OUTRIGGER TIP WITH ITS EXIT ANGLE ORIENTED BETWEEN THE HALYARD ATTACHMENT POINT AND YOUR BAIT TO AVOID UNNECESSARY HALYARD CHAFE. ADJUST THE EXIT ANGLE AS NEEDED VIA LOOSENING THE TOP SECTION'S LENGTH ADJUSTMENT CLAMP AND TWISTING THE OUTRIGGER'S TIP SECTION TO THE OPTIMUM ANGLE.



2N1 RIGGING

IF YOU PURCHASED OPTIONAL 2N1 RIGGING WITH YOUR I.T. SERIES RETRACTABLE OUTRIGGERS, IT WILL COME PRE-INSTALLED. ALL YOU WILL NEED TO DO ONCE YOU HAVE THE OUTRIGGER INSTALLED IN YOUR MOUNTS IS UNTIE THE HALYARD FROM THE TOP SIDE OF THE UPPER RELEASE CLIP AND RETIE IT TO YOUR DESIRED TENSION LEVEL, TRIMMING OFF ANY EXCESS HALYARD LINE REMAINING.



HALYARD SHOWN WITH OPTIONAL 2N1 RIGGING ALLOWS 2 RELEASE CLIPS ON A SINGLE HALYARD WITH A "FLOATING" LOWER RELEASE CLIP